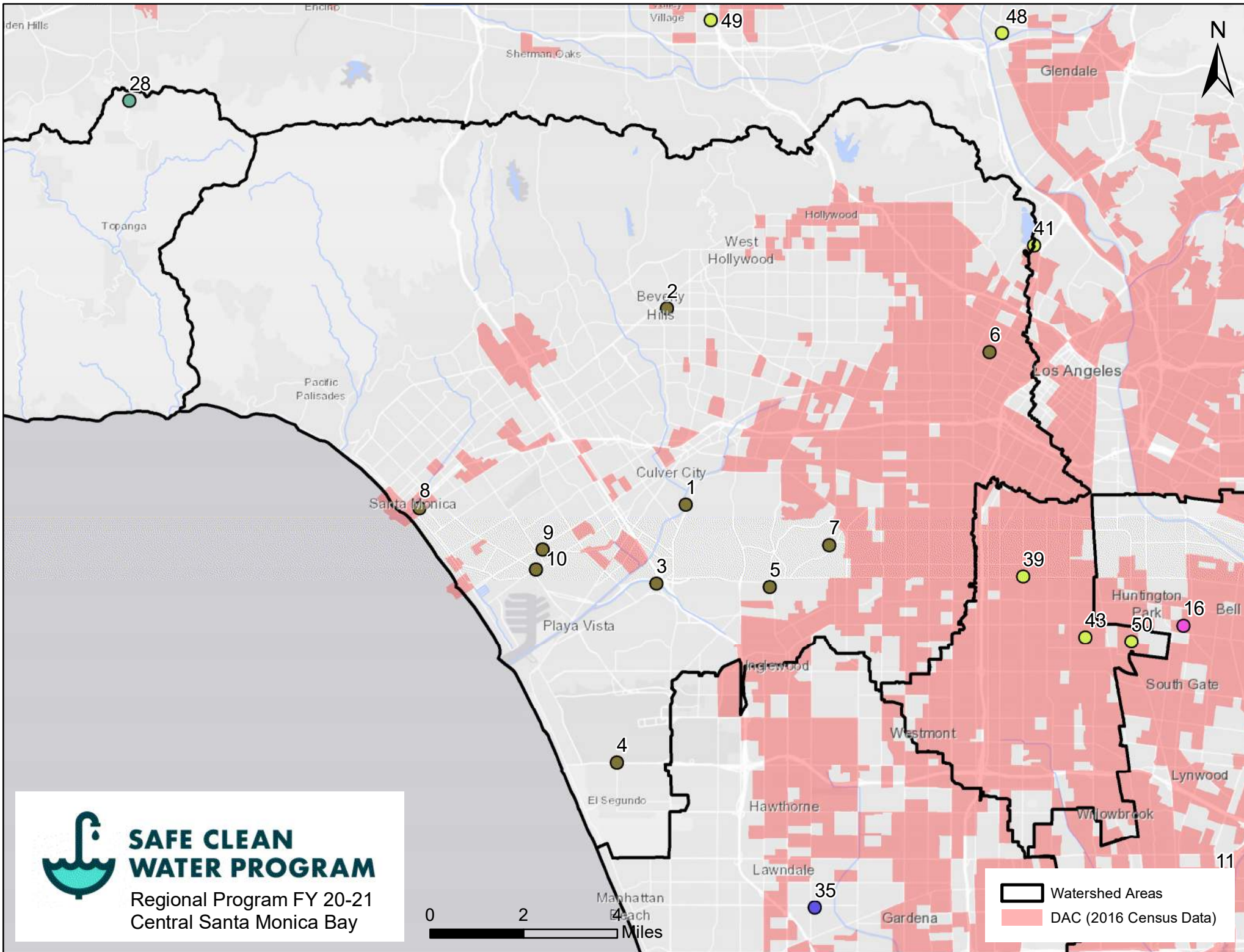






DAC Summary

SCW.ID	Watershed Area	Project Name	Municipality	Distance From DAC	DAC Claimed	DAC Justification
1	Central Santa Monica Bay	Ballona Creek TMDL Project	Culver City	<1 mile	No	
2	Central Santa Monica Bay	Beverly Hills Burton Way Green Street and Water Efficient Landscape Project	Beverly Hills		No	
3	Central Santa Monica Bay	Culver City Mesmer Low Flow Diversion	Culver City	<0.5 mile	No	
4	Central Santa Monica Bay	Imperial Highway Sunken Median	Los Angeles		No	
5	Central Santa Monica Bay	Ladera Park Stormwater Improvements Project	Unincorporated	<0.5 mile	No	
6	Central Santa Monica Bay	MacArthur Lake Rehabilitation Project	Los Angeles	within DAC	Yes	<p>Much of the community surrounding the Project area is considered “Disadvantaged” or “Severely Disadvantaged” according to United States Census data. In these areas, public works projects can often generate concerns about gentrification and other changes to the fabric of the community. The outreach approach should be sensitive to these concerns and incorporate mechanisms to provide community members a forum to positively channel their concerns.</p> <p>According to census data the home ownership rate in Los Angeles is less than 50 percent, consequently there is likely to be a high number of renters in the community impacted by the Project who tend to be more negatively affected by gentrification through higher rents, rather than owners who may benefit from increased property values. Benefits to renters in terms of quality of life, and other direct uses will be important part of these discussions. Additionally, there is a large amount of commercial activity surrounding the Park in storefronts as well as in various forms of street vendors. All adjacent users should be taken into account in the outreach planning.</p>
7	Central Santa Monica Bay	Monteith Park and View Park Green Alley Stormwater Improvements Project	Unincorporated	<0.5 mile	Yes	The View Park Alley is located adjacent to and will provide connectivity and beneficial uses to a DAC.
8	Central Santa Monica Bay	Sustainable Water Infrastructure Project	Santa Monica	within DAC	No	
9	Central Santa Monica Bay	Venice High School	Los Angeles	<1 mile	Yes	Venice High School houses two Magnet Programs that focus on school integration and benefit students from Disadvantaged Communities. The mission of these programs is to ensure maximum success for the varied socio-economic and culturally diverse student population. LAUSD maintains an active and meaningful public outreach and engagement aimed at the immediate neighborhood.
10	Central Santa Monica Bay	Washington Boulevard Stormwater and Urban Runoff Diversion	Culver City		No	



SAFE CLEAN WATER PROGRAM

Regional Program FY 20-21
Central Santa Monica Bay

 Watershed Areas
 DAC (2016 Census Data)

Safe, Clean Water Program

Fiscal Year 2020-2021

WASC Review Sheet



Project Name	
Project Lead	
Total SCW Funding Requested	
Current Phasing (Can it be rephased?)	

Question	Yes/No	Notes
Does this project assist in achieving compliance with MS4 permit? If Yes, explain how.		
Does the project provide DAC benefits (refer to the ordinance for definition)? If Yes, explain how.		
Does the project provide benefits to the municipality? If Yes, explain how.		
Does the project prioritize nature-based solutions? If Yes, explain how.		
Does this meet the goals of the program stated in the ordinance (refer to Section 18.03)		
Does the project/scientific study have a nexus to storm water and urban runoff capture? If yes, explain how.		

Safe, Clean Water Program

Fiscal Year 2020-2021

WASC Review Sheet



Question	Yes/No	Notes
What is the anticipated CEQA and permitting needs and how is this incorporated in the cost and schedule?		
Why is this the best location for this type of project?		
Were other alternatives considered? Why is this the best solution?		
How was the Project developed? (ie IRWMP/EWMP process, community engagement, etc...)		
If not funded this round, would we lose the opportunity to fund this project at future rounds?		
General Notes (and follow up questions regarding any topic in the feasibility study/project submittal)		
Public Comments		

NAME

DATE

Safe, Clean Water Program Central Santa Monica Bay Watershed Area



Rank Infrastructure Program Projects, Technical Resources Program Projects and Scientific Studies

Instructions:

1. Rank the following projects from most to least preferred, 1 being the most preferred.
2. Do not repeat values.
3. If you DO NOT recommend a project, do not provide a ranking.

Infrastructure Program (IP)

- _____ IP - Ballona Creek TMDL Project
- _____ IP - Beverly Hills Burton Way Green Street and Water Efficient Landscape Project
- _____ IP - Culver City Mesmer Low Flow Diversion
- _____ IP - Imperial Highway Sunken Median
- _____ IP - Ladera Park Stormwater Improvements Project
- _____ IP - MacArthur Lake Rehabilitation Project
- _____ IP - Monteith Park and View Park Green Alley Stormwater Improvements Project
- _____ IP - Sustainable Water Infrastructure Project
- _____ IP - Washington Boulevard Stormwater and Urban Runoff Diversion
- _____ ~~IP - Venice High School~~

Technical Resources Program (TRP)

- _____ TRP - Edward Vincent Junior Park Stormwater Improvements Project

Scientific Studies (SS)

- _____ SS - Coordinated Safe Clean Watershed Plans
- _____ SS - Recalculation of Wet Weather Zinc Criterion
- _____ SS - Regional Scientific Study to Support Protection of Human Health...